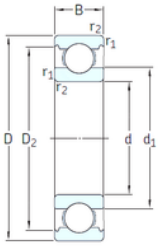




# GQ (Xiamen) Bearing Co., Ltd.



VA201



ZZ/VA201



ZZ/VA208



ZZ/VA228

## 30 mm x 62 mm x 16 mm SKF 6206/VA201 deep groove ball bearings

Bearing No. 6206/VA201

6206/VA201 Bearing 2D drawings and 3D CAD models

Size	30x62x16 mm
Bore Diameter	30 mm
Outer Diameter	62 mm
Width	16 mm
d	30 mm
D	62 mm
B	16 mm
C	16 mm
d1	40,3 mm
r1 min.	1 mm
r2 min.	1 mm
D2	54,1 mm
Weight	0,2 Kg
Temperature -	30 to +250 °
Basic static load rating (C0)	11,2 kN
Category	Single Row Ball Bearings
Inventory	0.0
Manufacturer Name	SKF
Minimum Buy Quantity	N/A
Weight / Kilogram	0.201
EAN	7316577087584
Product Group	B00308
Enclosure	Open
Precision Class	ABEC 1   ISO P0
Maximum Capacity / Filling Slot	No



## GQ (Xiamen) Bearing Co., Ltd.

Rolling Element	Ball Bearing
Snap Ring	No
Internal Special Features	Polyalkylene Glycol/Graphite Mixture Filled
Cage Material	Steel
Internal Clearance	C0-Medium
Inch - Metric	Metric
Long Description	30MM Bore; 62MM Outside Diameter; 16MM Outer Race Width; Open; Ball Bearing; ABEC 1   ISO P0; No Filling Slot; No Snap Ring; Polyalkylene Glycol/Graphite Mixture Filled Internal Special Features; C0-M
Other Features	Deep Groove   Extreme Temperature Variant
Category	Single Row Ball Bearing
UNSPSC	31171504
Harmonized Tariff Code	8482.10.50.68
Noun	Bearing
Keyword String	Ball
Manufacturer URL	<a href="http://www.skf.com">http://www.skf.com</a>
Manufacturer Item Number	6206/VA201
Weight / LBS	0.439
Inner Race Width	0 Inch   0 Millimeter
Bore	1.181 Inch   30 Millimeter
Outside Diameter	2.441 Inch   62 Millimeter
Outer Race Width	0.63 Inch   16 Millimeter
bore diameter:	30 mm
static load capacity:	11.2 kN
outside diameter:	62 mm
precision rating:	Not Rated
overall width:	16 mm



## GQ (Xiamen) Bearing Co., Ltd.

finish/coating:	Uncoated
bore type:	Round
cage material:	Steel
closure type:	Open
outer ring width:	16 mm
row type & fill slot:	Single Row Non-Fill Slot
fillet radius:	1 mm
snap ring included:	Without Snap Ring
maximum rpm:	190 RPM
internal clearance:	C0
series:	62
operating temperature range:	-20 to +480 ° F
resistance features:	Corrosion Resistant, Extreme Temperature
$d_1$	40.36 mm
$D_2$	54.06 mm
$r_{1,2}$ min.	1 mm
$d_a$ min.	35.6 mm
$D_a$ max.	56.4 mm
$r_a$ max.	1 mm
Basic dynamic load rating C	20.3 kN
Basic static load rating $C_0$	11.2 kN
Limiting speed	190 r/min
Limiting temperature T max.	250 ° C
Mass bearing	0.2 kg